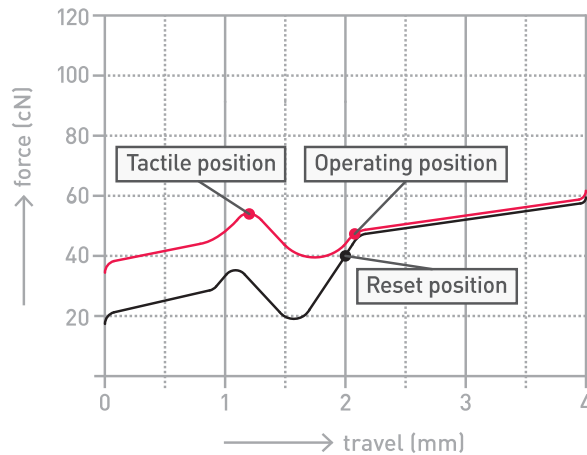


# CHERRY MX2A Brown

## MX2A-G1NN/W



## The new generation of gold standard keyboard switches

Original CHERRY MX is the world's leading precision technology for mechanical key switches. The CHERRY Gold Crosspoint contact concept and the unprecedented production quality "Made in Germany" are unique. The MX2A series introduces a new level typing experience, setting a new standard for mechanical key switches.

### Key benefits:

- Engineered and Made in Germany
- CHERRY MX2A Brown switch: Soft pressure point, key stroke with soft tactile contact feedback
- Industry-leading CHERRY Gold Crosspoint technology
- Factory-applied, premium-grade lubricant
- Noise-reducing barrel spring design
- Unique, spring-centering stem
- Diamond polished stem and spring guidance
- Glide-optimized stem guidance ribs
- Short bounce time for high switching frequency (such as for fast typing)
- Self-cleaning contacts
- Switch resistant to dust and dirt
- Over 100 million keystrokes with no loss of quality guaranteed

### Technical Data:

• Switch Type:	MX Mechanical Switch
• Mechanical Fastening:	see table "Models"
• Connection type:	Soldered or hot-swappable
• Protection class:	IP40
• Operation characteristics:	Tactile
• Switching voltage:	5V
• Durability:	> 100 million actuations
• Contact configuration:	Single-pole contact
• Actuator travel:	4mm
• Pretravel:	2mm
• Initial force:	30cN
• Actuation force:	45cN
• Pressure point force:	55cN
• Bounce time:	typ. <1ms
• Lighting:	Prepared for use with 2-Pin LED (THT, through hole)
• Spring:	Stainless steel
• Contacts:	High-quality gold alloy

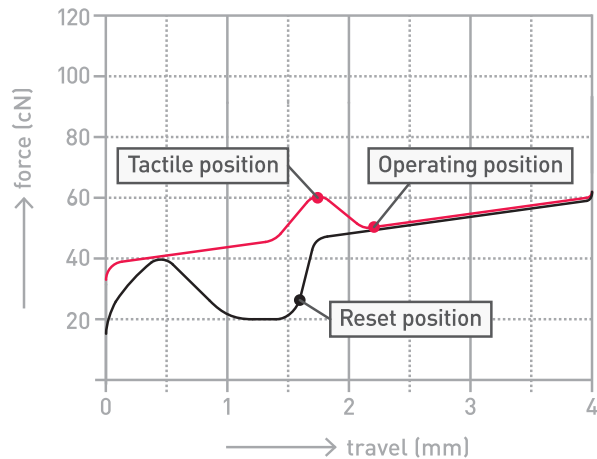
Errors, technical changes and delivery possibilities excepted. Technical information refers only to the specifications of the products. Features may differ from the information provided.

## Models:

	<b>Order Number</b>	<b>Description</b>	<b>Fastening</b>
1	MX2A-G1NN	Cherry MX2A Brown	Snap fastening in frame (3 Pin)
2	MX2A-G1NW	Cherry MX2A Brown	Fixation pins in the PCB (5 Pin)

# CHERRY MX2A Blue

## MX2A-E1NN/W



## The new generation of gold standard keyboard switches

Original CHERRY MX is the world's leading precision technology for mechanical key switches. The CHERRY Gold Crosspoint contact concept and the unprecedented production quality "Made in Germany" are unique. The MX2A series introduces a new level typing experience, setting a new standard for mechanical key switches.

### Key benefits:

- Engineered and Made in Germany
- CHERRY MX2A Blue switch: Click pressure point, key stroke with tactile and audible contact feedback
- Industry-leading CHERRY Gold Crosspoint technology
- Unique, spring-centering stem
- Diamond polished stem and spring guidance
- Glide-optimized stem guidance ribs
- Short bounce time for high switching frequency (such as for fast typing)
- Self-cleaning contacts
- Switch resistant to dust and dirt
- Over 50 million keystrokes with no loss of quality guaranteed

### Technical Data:

- |                              |   |
|------------------------------|---|
| • Switch Type:               | MX Mechanical Switch                                |
| • Mechanical Fastening:      | see table "Models"                                  |
| • Connection type:           | Soldered or hot-swappable                           |
| • Protection class:          | IP40  |
| • Operation characteristics: | Tactile with acoustic feedback                      |
| • Switching voltage:         | 5V  |
| • Durability:                | > 50 million actuations                             |
| • Contact configuration:     | Single-pole contact                                 |
| • Actuator travel:           | 4mm   |
| • Pretravel:                 | 2.2mm   |
| • Initial force:             | 25cN  |
| • Actuation force:           | 50cN  |
| • Pressure point force:      | 60cN  |
| • Bounce time:               | typ. <1ms   |
| • Lighting:                  | Prepared for use with 2-Pin LED (THT, through hole) |
| • Spring:                    | Stainless steel                                     |
| • Contacts:                  | High-quality gold alloy                             |

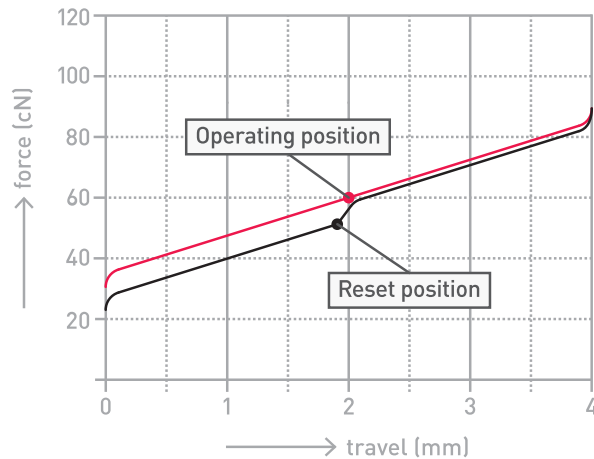
Errors, technical changes and delivery possibilities excepted. Technical information refers only to the specifications of the products. Features may differ from the information provided.

## Models:

	<b>Order Number</b>	<b>Description</b>	<b>Fastening</b>
1	MX2A-E1NN	Cherry MX2A Blue	Snap fastening in frame (3 Pin)
2	MX2A-E1NW	Cherry MX2A Blue	Fixation pins in the PCB (5 Pin)

# CHERRY MX2A Black

## MX2A-11NN/W



## The new generation of gold standard keyboard switches

Original CHERRY MX is the world's leading precision technology for mechanical key switches. The CHERRY Gold Crosspoint contact concept and the unprecedented production quality "Made in Germany" are unique. The MX2A series introduces a new level typing experience, setting a new standard for mechanical key switches.

### Key benefits:

- Engineered and Made in Germany
- CHERRY MX2A Black switch: Linear actuation – switching function with a defined force of approx. 60 cN without contact feedback
- Industry-leading CHERRY Gold Crosspoint technology
- Factory-applied, premium-grade lubricant
- Noise-reducing barrel spring design
- Unique, spring-centering stem
- Diamond polished stem and spring guidance
- Glide-optimized stem guidance ribs
- Short bounce time for high switching frequency (such as for fast typing)
- Self-cleaning contacts
- Switch resistant to dust and dirt
- Over 100 million keystrokes with no loss of quality guaranteed

### Technical Data:

• Switch Type:	MX Mechanical Switch
• Mechanical Fastening:	see table "Models"
• Connection type:	Soldered or hot-swappable
• Protection class:	IP40
• Operation characteristics:	Linear, heavy
• Switching voltage:	5V
• Durability:	> 100 million actuations
• Contact configuration:	Single-pole contact
• Actuator travel:	4mm
• Pretravel:	2mm
• Initial force:	30cN
• Actuation force:	60cN
• Bounce time:	typ. <1ms
• Lighting:	Prepared for use with 2-Pin LED (THT, through hole)
• Spring:	Stainless steel
• Contacts:	High-quality gold alloy

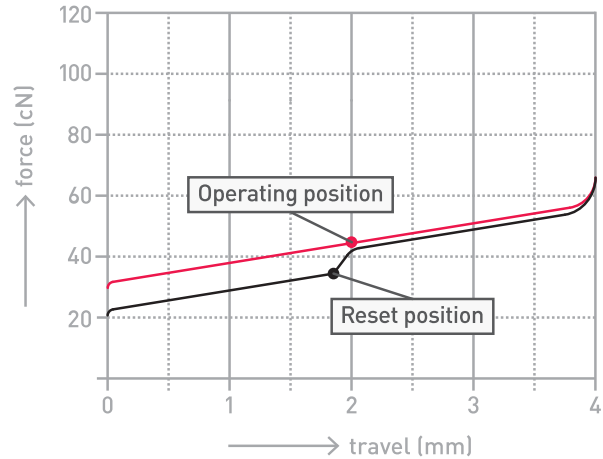
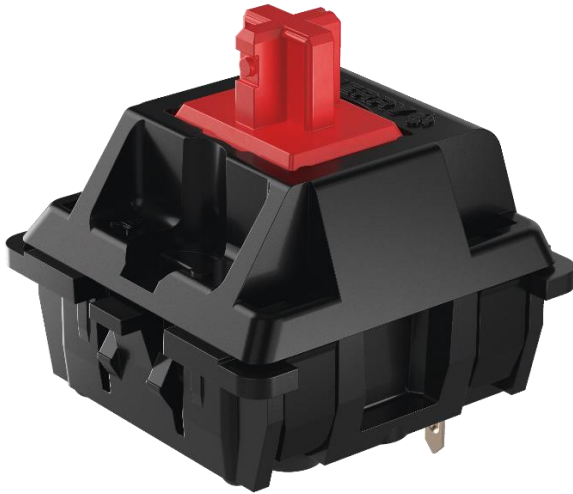
Errors, technical changes and delivery possibilities excepted. Technical information refers only to the specifications of the products. Features may differ from the information provided.

**Models:**

	<b>Order Number</b>	<b>Description</b>	<b>Fastening</b>
1	MX2A-11NN	Cherry MX2A Black	Snap fastening in frame (3 Pin)
2	MX2A-11NW	Cherry MX2A Black	Fixation pins in the PCB (5 Pin)

# CHERRY MX2A Red

## MX2A-L1NN/W



## The new generation of gold standard keyboard switches

Original CHERRY MX is the world's leading precision technology for mechanical key switches. The CHERRY Gold Crosspoint contact concept and the unprecedented production quality "Made in Germany" are unique. The MX2A series introduces a new level typing experience, setting a new standard for mechanical key switches.

### Key benefits:

- Engineered and Made in Germany
- CHERRY MX2A Red switch: Linear easy actuation without pressure point with minimal resistance
- Industry-leading CHERRY Gold Crosspoint technology
- Factory-applied, premium-grade lubricant
- Noise-reducing barrel spring design
- Unique, spring-centering stem
- Diamond polished stem and spring guidance
- Glide-optimized stem guidance ribs
- Short bounce time for high switching frequency (such as for fast typing)
- Self-cleaning contacts
- Switch resistant to dust and dirt
- Over 100 million keystrokes with no loss of quality guaranteed

### Technical Data:

• Switch Type:	MX Mechanical Switch
• Mechanical Fastening:	see table "Models"
• Connection type:	Soldered or hot-swappable
• Protection class:	IP40
• Operation characteristics:	Linear
• Switching voltage:	5V
• Durability:	> 100 million actuations
• Contact configuration:	Single-pole contact
• Actuator travel:	4mm
• Pretravel:	2mm
• Initial force:	30cN
• Actuation force:	45cN
• Bounce time:	typ. <1ms
• Lighting:	Prepared for use with 2-Pin LED (THT, through hole)
• Spring:	Stainless steel
• Contacts:	High-quality gold alloy

Errors, technical changes and delivery possibilities excepted. Technical information refers only to the specifications of the products. Features may differ from the information provided.

## Models:

	<b>Order Number</b>	<b>Description</b>	<b>Fastening</b>
1	MX2A-L1NN	Cherry MX2A Red	Snap fastening in frame (3 Pin)
2	MX2A-L1NW	Cherry MX2A Red	Fixation pins in the PCB (5 Pin)